

# Blackwater Watershed Project Development Access Map

**Legend**

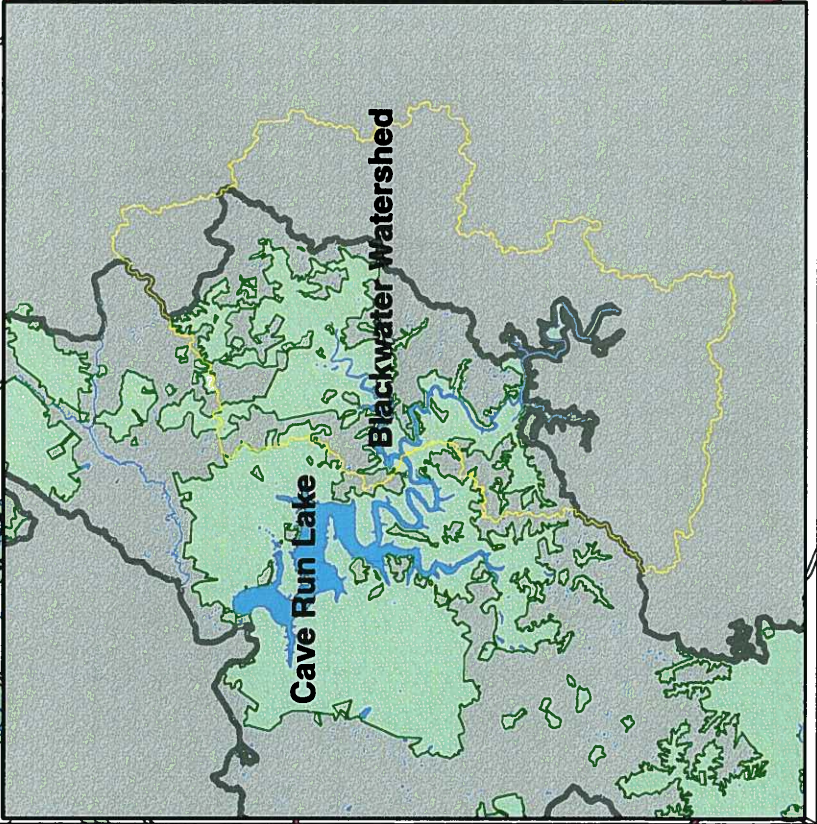
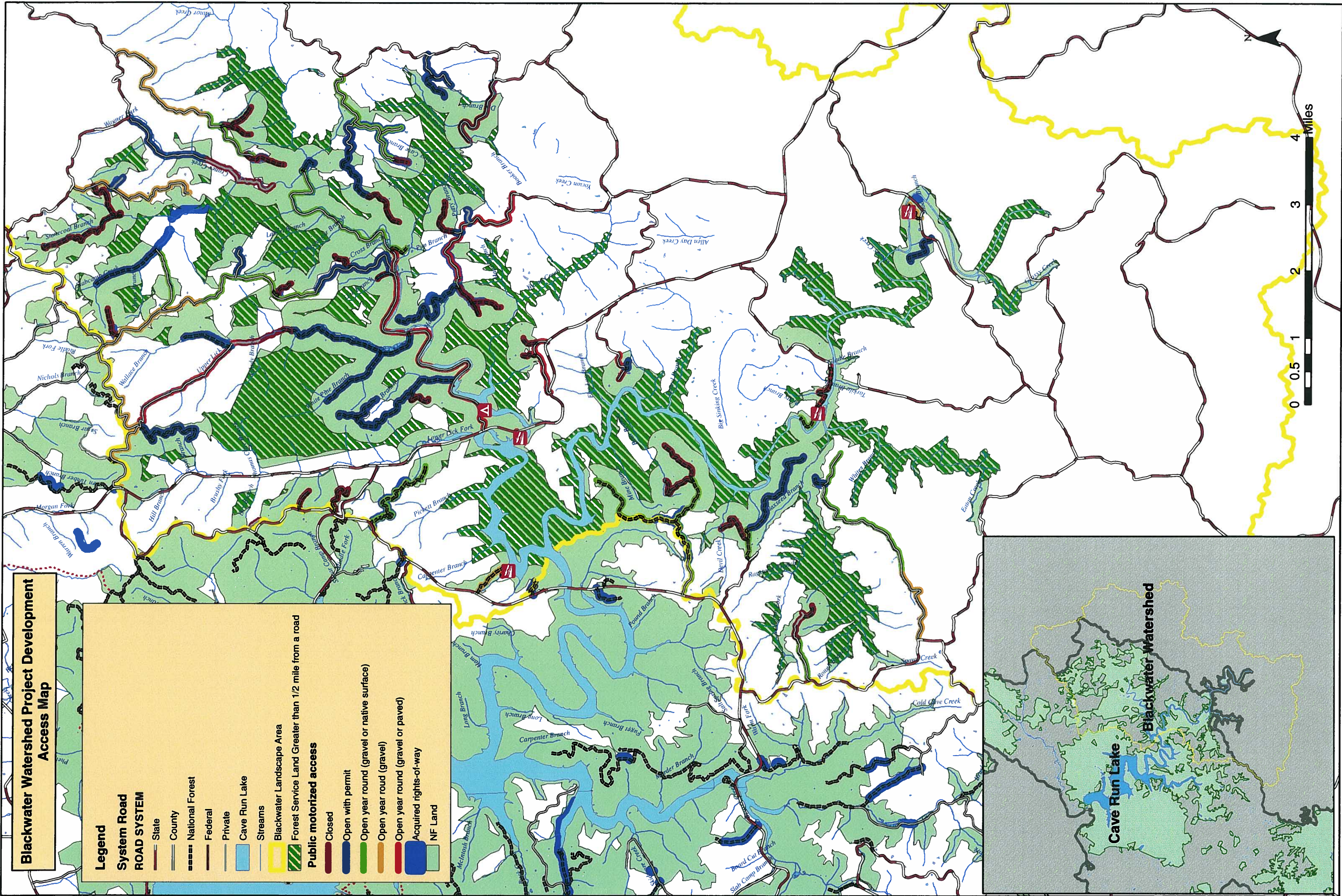
**System Road**

**ROAD SYSTEM**

- State
- County
- National Forest
- Federal
- Private
- Cave Run Lake
- Streams
- Blackwater Landscape Area
- Forest Service Land Greater than 1/2 mile from a road

**Public motorized access**

- Closed
- Open with permit
- Open year round (gravel or native surface)
- Open year round (gravel)
- Open year round (gravel or paved)
- Acquired rights-of-way
- NF Land





## Blackwater Watershed Project Development: Access

- There are over 200 miles of roads in the watershed
- State and county roads are open year round for motorized use
- There are 38 miles of Forest Service System Roads in the watershed
- All Forest Service system roads in the watershed are available year round for non-motorized use
- On the National Forest System Roads:
  - 9 miles are open for year round public use
    - Open year round (paved): <1 mile
    - Open year round (gravel): 7 miles
    - Open year round (native surface): 2 miles
  - 16 miles of system roads are available for motorized use by the public by permit:
    - Gravel: 2.37 miles
    - Native surface: 13.35 miles
  - 13 miles of system roads are closed to all public motorized use
  - 8.5 miles of system roads are in riparian areas
- Approximately 11,000 acres (42%) of National Forest System Land in the watershed is over ¼ mile from any road
- There are no National Forest System Trails in the watershed
- There are three developed and one primitive boat ramp in the watershed