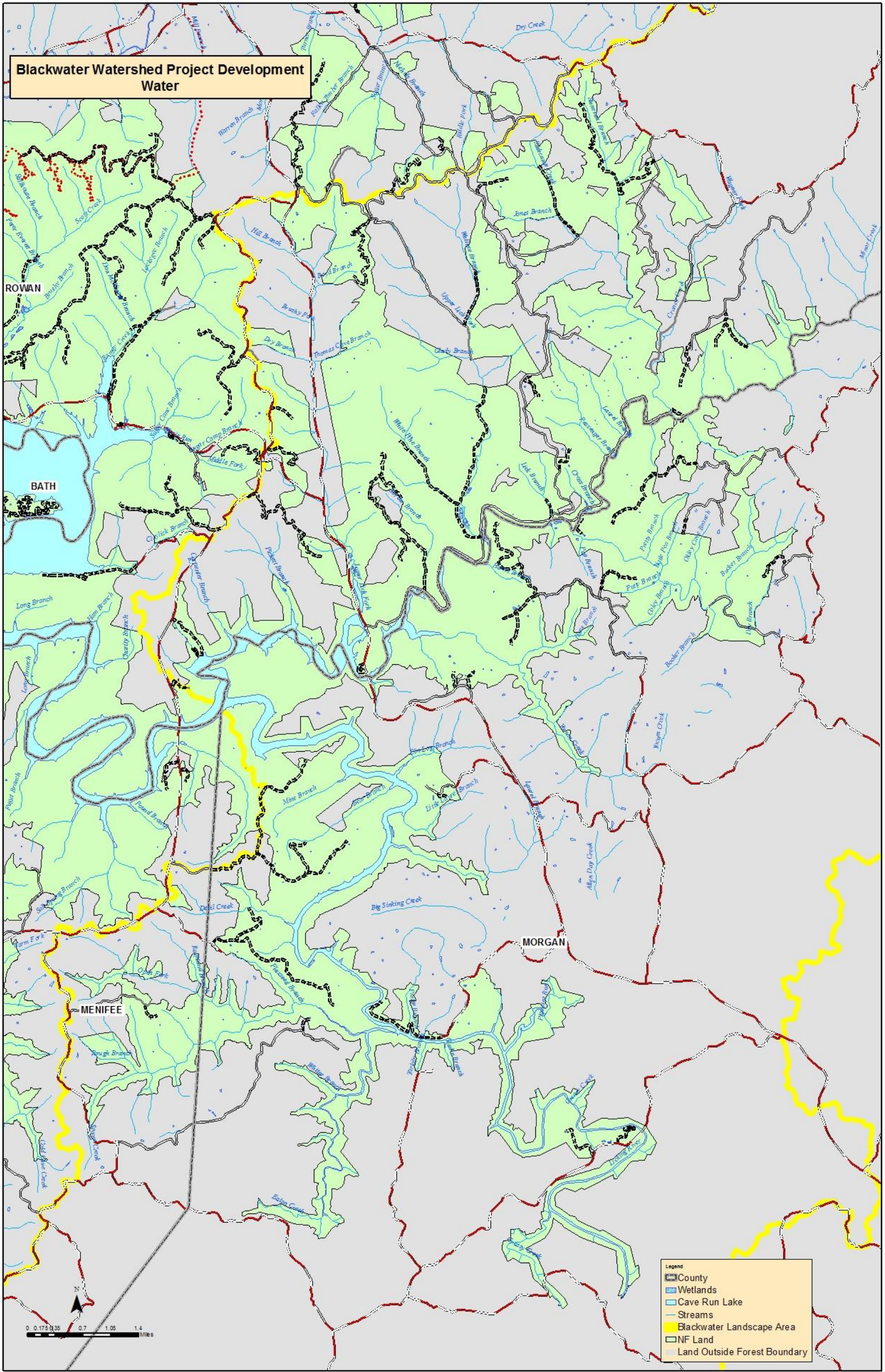


Blackwater Watershed Project Development Water



Wetland size	Sum of acres
<0.5	16.44
0.5-1	1.57
1-1.5	3.83
1.5-2	3.25
Grand Total	25.10

Water

Definition: Areas covered by water a significant portion of the year. Includes portions of Cave Run Lake and wetlands of various origin and size.

General landscape location: All slope positions and aspects. Concentrated in valley bottoms and ridgetops.