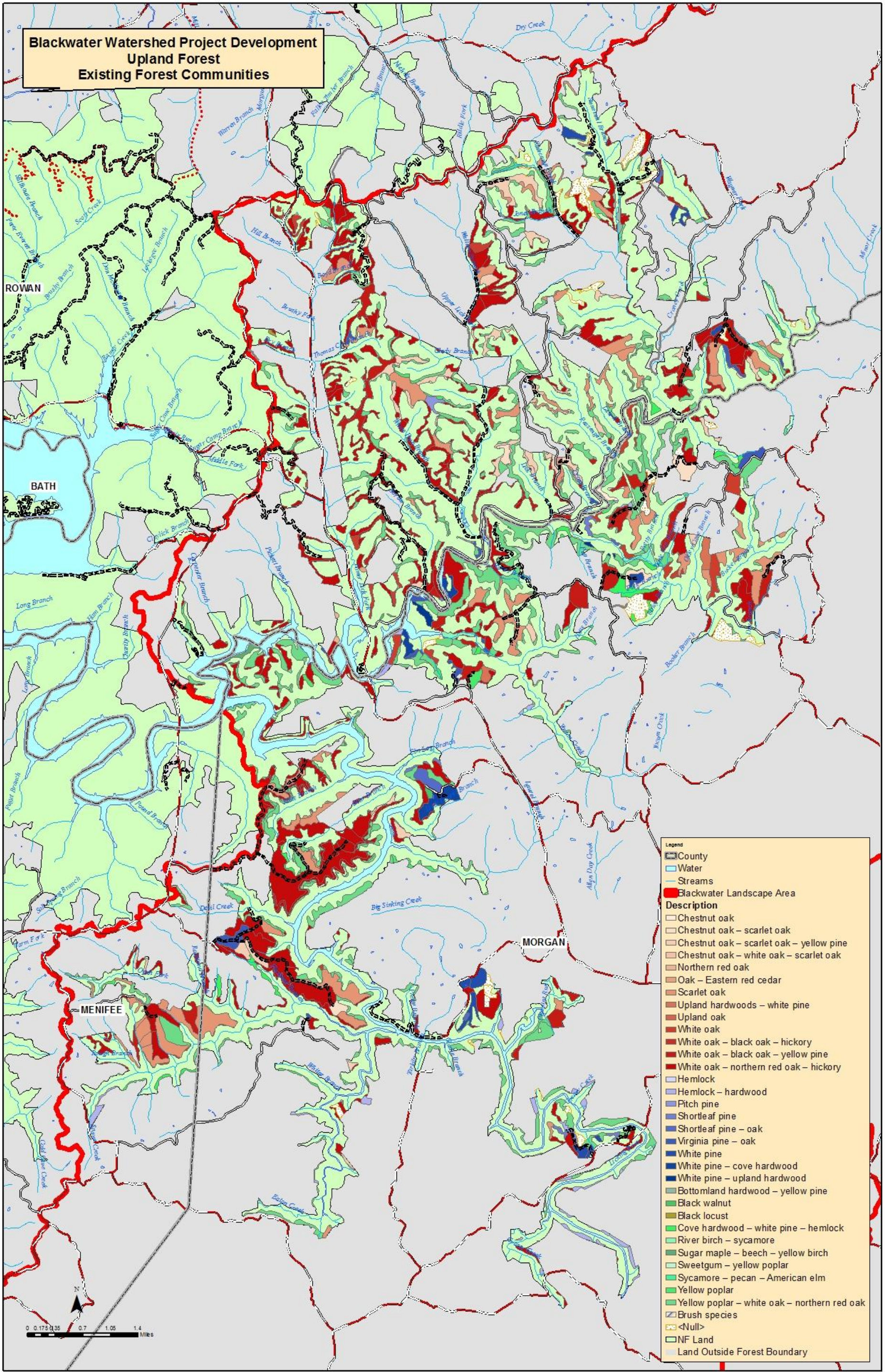


**Blackwater Watershed Project Development  
Upland Forest  
Existing Forest Communities**



Legend	
	County
	Water
	Streams
	Blackwater Landscape Area
Description	
	Chestnut oak
	Chestnut oak - scarlet oak
	Chestnut oak - scarlet oak - yellow pine
	Chestnut oak - white oak - scarlet oak
	Northern red oak
	Oak - Eastern red cedar
	Scarlet oak
	Upland hardwoods - white pine
	Upland oak
	White oak
	White oak - black oak - hickory
	White oak - black oak - yellow pine
	White oak - northern red oak - hickory
	Hemlock
	Hemlock - hardwood
	Pitch pine
	Shortleaf pine
	Shortleaf pine - oak
	Virginia pine - oak
	White pine
	White pine - cove hardwood
	White pine - upland hardwood
	Bottomland hardwood - yellow pine
	Black walnut
	Black locust
	Cove hardwood - white pine - hemlock
	River birch - sycamore
	Sugar maple - beech - yellow birch
	Sweetgum - yellow poplar
	Sycamore - pecan - American elm
	Yellow poplar
	Yellow poplar - white oak - northern red oak
	Brush species
	<Null>
	NF Land
	Land Outside Forest Boundary



Forest Type	Acres	% of NFS Land
White oak - northern red oak - hickory	3,040	34.93%
Yellow poplar - white oak - northern red oak	2,057	23.64%
Scarlet oak	1,217	13.99%
White oak - black oak - yellow pine	604	6.95%
Chestnut oak - scarlet oak - yellow pine	396	4.55%
White oak	247	2.84%
Cove hardwood - white pine - hemlock	173	1.98%
White pine	141	1.63%
Virginia pine - oak	128	1.47%
Hemlock - hardwood	125	1.44%
Chestnut oak - scarlet oak	93	1.07%
White pine - cove hardwood	92	1.06%
Yellow poplar	63	0.72%
River birch - sycamore	47	0.54%
Shortleaf pine - oak	43	0.50%
Upland hardwoods - white pine	41	0.48%
Shortleaf pine	39	0.45%
Sugar maple - beech - yellow birch	25	0.29%
Chestnut oak	24	0.28%
White pine - upland hardwood	22	0.25%
Bottomland hardwood - yellow pine	15	0.18%
Pitch pine	15	0.18%
Sycamore - pecan - American elm	13	0.15%
Chestnut oak - white oak - scarlet oak	12	0.14%
Black walnut	9	0.10%
Northern red oak	5	0.06%
Black locust	4	0.05%
Oak - Eastern red cedar	4	0.04%
Upland oak	1	0.01%
Hemlock	1	0.01%
Sweetgum - yellow poplar	1	0.01%
White oak - black oak - hickory	1	0.01%
Brush species	0	0.00%
<b>Grand Total</b>	<b>8,702</b>	<b>100.00%</b>

**Upland Forest**

**Definition:** All forests not associated with cliffline or riparian forests

**General landscape location:** All aspects and slope positions

