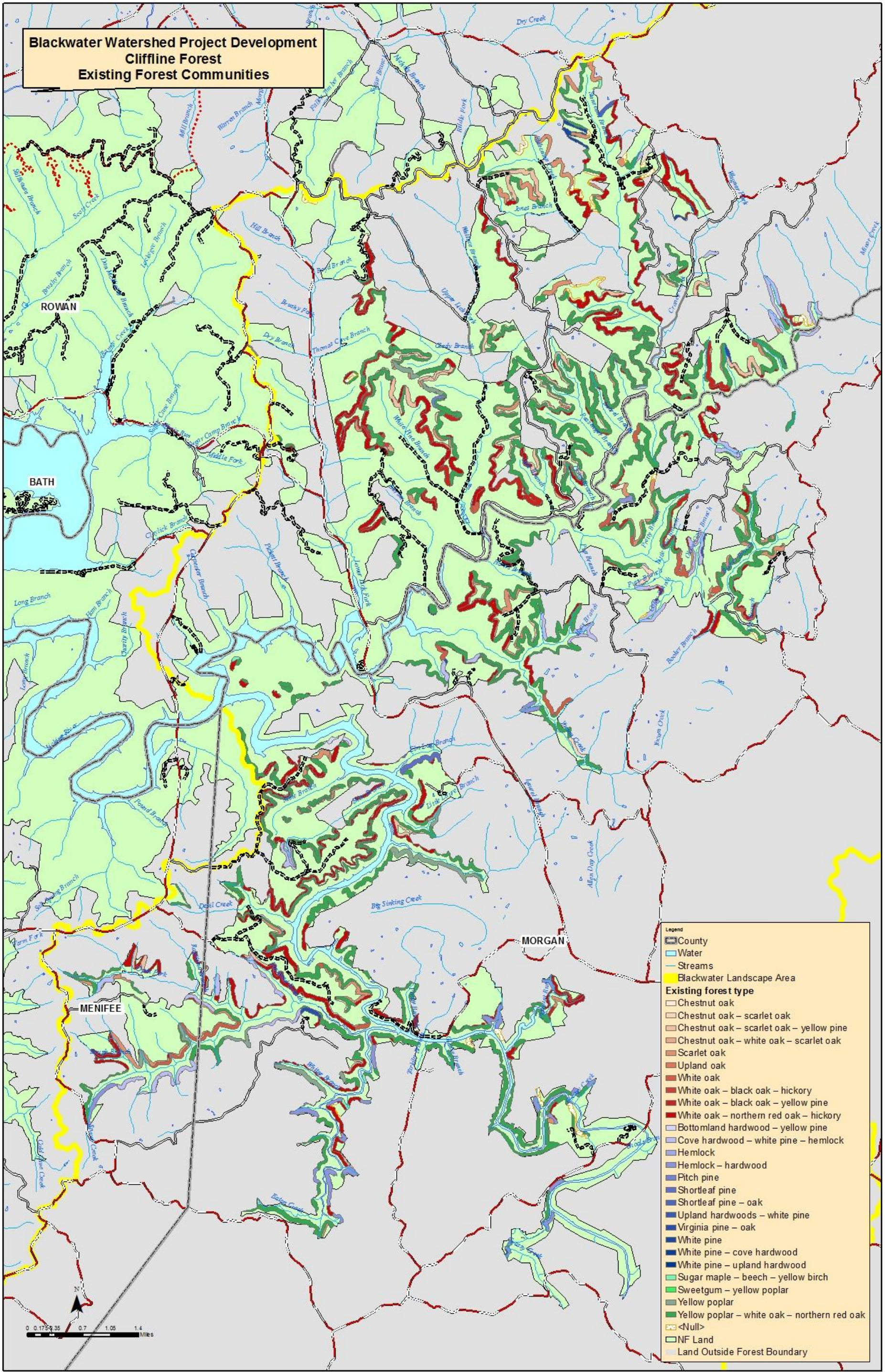


**Blackwater Watershed Project Development
Cliffline Forest
Existing Forest Communities**



Forest type	Acres	% of cliffline forest
Yellow poplar - white oak - northern red oak	2,650	42.89%
White oak - northern red oak - hickory	1,448	23.44%
Scarlet oak	432	6.99%
Cove hardwood - white pine - hemlock	341	5.52%
Chestnut oak - scarlet oak - yellow pine	297	4.80%
White oak - black oak - yellow pine	242	3.92%
Hemlock - hardwood	188	3.04%
Yellow poplar	146	2.36%
White oak	140	2.27%
(blank)	125	2.02%
Shortleaf pine	28	0.45%
Chestnut oak - scarlet oak	27	0.44%
White pine	26	0.43%
Virginia pine - oak	20	0.32%
Sugar maple - beech - yellow birch	15	0.25%
Chestnut oak	9	0.15%
Chestnut oak - white oak - scarlet oak	9	0.14%
Bottomland hardwood - yellow pine	8	0.13%
Shortleaf pine - oak	8	0.13%
Pitch pine	6	0.10%
Upland hardwoods - white pine	6	0.09%
White oak - black oak - hickory	4	0.06%
White pine - upland hardwood	2	0.03%
White pine - cove hardwood	1	0.02%
Sweetgum - yellow poplar	1	0.01%
Upland oak	0	0.01%
Hemlock	0	0.00%
Grand Total	6,179	100.00%

